

MyEquipAuctions

CONSTRUCTION DIVISION .com

June 1, 2017

HEAVY EQUIPMENT AUCTIONS



CONSTRUCTION AUCTIONS

**CONSTRUCTION EQUIPMENT AUCTION
SATURDAY 24th JUNE – 10:00 AM EDT
WARRENTON, NC**

Sale Site Location: 2254 Hwy. 58 – Warrenton, NC 27589
 Link Belt 330LX, cab, excavator
 (2) Hyundai Rolex 210LC7 – cab, excavator
 Yanmar Vi075-A, excavator
 Yanmar Vi055-5, excavator
 Link Belt 80, excavator
 (2) JD 650H LT bulldozers
 Terex TX 760B backhoe
 JD 410E backhoe
 Gehl 6640 skid steer
 Daewoo Mega 200 TC –III loader
 '05 Sterling 12-wheel dump
 '07 & '06 Chevrolet service trucks
 (3) Flatbed equipment trailers
 (3) Rammax packers
 Ingersoll Rand air compressor
 MillerBobcat 223 welder/generator
 (2) Muller B-101 tapping machines
 Backhoe buckets
 Trench boxes
 Sheeps foot roller
 Ford 2000, dsl.
 IH 140 w/cultivators
 Misc. shop tools



**Details at
www.ebharris.com**

**No Buyer's Premium - Certified Funds
Bid on Line @ Proxibid**

(252) 257-2140
3200 NC HWY 58
WARRENTON, NC 27589

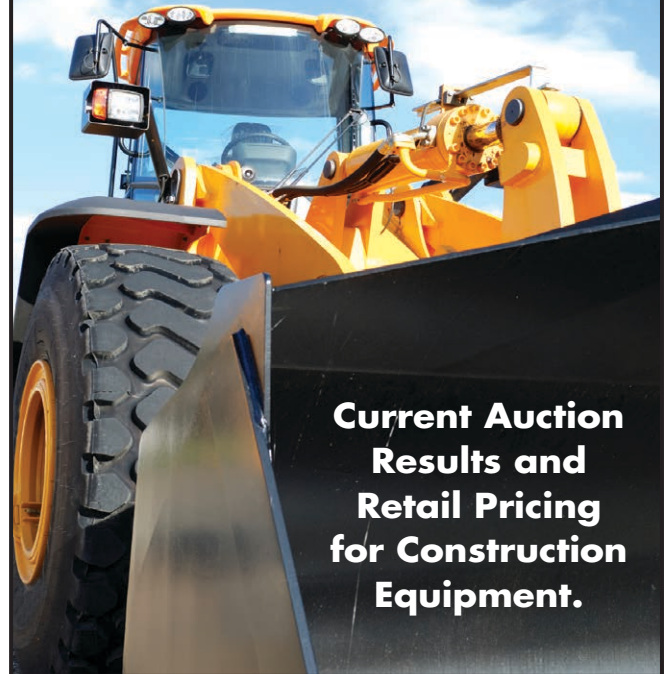


NCAL 1468
NC#C 4264
VAL 146
SCAL 3895

**HOT LINE[®]
CONSTRUCTION E-UPDATE**

AVAILABLE MONTHLY

Worldwide!



**Current Auction
Results and
Retail Pricing
for Construction
Equipment.**

Surplus Construction/Landscape Equipment

ONLINE ONLY AUCTION

Closes: Tuesday, June 20, 2017 @ 4:00 pm CDT

7301 W. CALUMET ROAD, MILWAUKEE, WI 53223

**INSPECTION:
Wednesday, May 31,
10:00-4:00 pm**

**EVERYTHING
IS SOLD
"AS IS,
WHERE IS"**



**SEE WEBSITE
FOR MORE
PHOTOS**

• 2000 Mack CL713 4/A Conventional Dump Trk, Dsl, Eaton Fuller Manual Trans, Steel Box w/ Tarp Sys, 73,000# GEW, 708,511 Mi • 2002 Mack CV713 Granite 4/A Conventional Dump Trk, Dsl, Eaton Fuller Trans, Steel Box w/ Tarp Sys, 73,000# GEW, (New Mack Dsl Eng w/Remaining Warranty) New Trans, Clutch, Brakes, & Rear Differential, New Tires, 574,095 Mi on the Chassis • 2003 Mack CL700 4/A Conventional Dump Trk, Dsl, Manual Trans, Steel Tarp Kit, 73K# GEW, New Trans, Clutch, Brakes & Tires, 382,247 Mi • 1998 Mack CL700/CL713 4/A Dump Trk, Dsl, Manual Trans, Tarp Sys, 73K# GEW, New Clutch, Brakes & Tires, 411,234 Mi • 2001 Sterling 3/A Dump Trk, Dsl, High-Side Kit, Tarp Sys, 68K #GEW, 406,427 Mi, (Repairs/Replacement Components throughout Op) • 2010 Bobcat Toolcat 5600 Utility Work Mach/UTV, Dsl, General Purpose Bkt, 1,039 Hrs • 1999 CAT IT14G Wheel Loader, 1.8 C.Y. Cap, 90 HP Dsl, 17,500# GEW, 10K Hrs • Flink 12PA44B 12' Loader Snow Blade • Wheel Loader Bucket • CAT Wheel Loader Forks • 2006 GMC 3500 S/A 1-Ton Dump Trk, Gas Eng, 4X4, Boss V-Plow Setup, Western Stainless Steel V-Box Spreader/Salter, 12K# GEW, 64,175 Mi • 2005 GMC 3500 S/A Dump Trk, 12K# GEW, Western Plow Setup, Western Stainless Steel V-Box Spreader/Salter, 52K Mi • 2007 Ford F-550 XL Super Duty 1-Ton Dump Trk, Dsl Eng, 4X4, Steel Box, 67,400 Mi • 2000 Ford 16' Box Trk, Gas Eng, Fiberglass Box, Landscaper Ramp, 167,529 Mi • 2003 Chev 2500 Van, Gas Eng, 112,023 Mi Indicated • 2007 Chev 3055HD Express Van, 175,455 Mi Reported • 2004 GMC G2500 Van, 194,156 Mi Indicated, Swing-Out Side Doors in Need of Repairs, Cracked Windshield! • 1989 GMC 7000 S/A Stake Bed Trk, Dsl, High Side Kit, Split Manual Trans, 16K# GEW, 183,798 Mi Indicated • 2004 Chev 2500HD Reg Cab Pickup, 4X4, Gas Eng, 8K# GEW, 143,554 Mi Reported • 2000 Chev 2500HD Silverado Std Cab Pickup, Gas Eng, Sprayed-On Bedliner, 8K# GEW, 148,111 Mi Indicated • 2004 GMC 2500HD Reg Cab Pickup, Gas Eng, 4X4, 8K# GEW, Poly Bedliner, 94,213 Mi Reported • 2004 Chev 2500HD Reg Cab Pickup, Gas Eng, 2WD, Poly Bedliner, 8K# GEW, 121,034 Mi Indicated • 2001 Ford F350 XL Superduty S/A Conventional Flatbed Trk, Dsl Eng, 8 1/2' Steel Deck Bed, Boss Plow Controls (No Blade), 8K# GEW, 79,745 Mi Indicated, BED MTD POLY TANK/ PUMP NOT INCL • 1999 Ford F350XL Superduty S/A 1-Ton Pickup, 4X4,

168,655 Mi Indicated, Cracked Windshield, Outdoors Unlimited Vehicle • Chev 2500 Silverado Ext. Cab Pickup, Western Plow Setup, Gas Eng, 4X4, 6' Pro Plow, Headache Rack, 185,054 Mi Reported, Outdoor Unlimited Vehicle • 2000 GMC 3500 Std Cab Pickup, Gas Eng, 4X4, 132,918 Mi Indicated, - Outdoors Unlimited Vehicle • New Holland LS180 Skid Steer Loader, 2,200# Cap, 67HP Dsl, 2-Spd, Encl. Cab, 7,200# GEW, 3,893 Hrs Indicated • 2003 Chev C1500 Pickup, 2WD, V-6 Gas Eng, Poly Bedliner, 137,500 Mi Indicated • 2002 Chev 2500HD Silverado Svc Trk, Utility Body, 10,000# GEW, 4X4, 119,300 Mi Reported • 2004 Chev 1500 Pickup, Gas Eng, Auto Trans, 4X4, Bed Mtd Toolbox • Boss 8'2" Power-V V-Plow Blade w/Ultramount • Western Ultra Finish Plow Blade w/Ultramount • Western Pro Plus Plow Blade w/Ultramount • Western Pro Plus+ Plow Blade w/Ultramount • Western 7'6" Plow Blade w/Ultramount • (2) Western 7'6" Plow Blade w/Poly Cutting Edge & Ultramount • CAT Loader Forks • Exmark Lazer Commercial Zero Turn Riding Lawn Mower, Kohler Gas Eng, 60" Deck, 5,022 Hrs • Poly V-Box Spreader/Salter • Tornado Poly V-Box Spreader/Salter • SnowEx Poly Tailgate Spreader/Salter Parts • SnowEx Poly V-Box Bed Spreader/Salter Parts • (2) Toro 2-Stage Snowblowers, MDL 624 & 1132 • Skid of Concrete Stamps with Coloring Chemicals • Skid of Walk Behind Spreaders • 1996 Yamaha Sugar Sand Jet Boat, 120 HP Merc Eng, w/ Trailer, NEEDS WORK, NO TITLE/REGISTRATION CARD!!



GREAT LAKES AUCTION COMPANY, INC.

9100 N. 107th Street • Milwaukee, WI 53224 • Phone: 414-371-1552 Ext. -2
www.greatlakesauction.net



VISIT WWW.GREATLAKESAUCTION.NET FOR FURTHER INFORMATION

10% BUYER'S FEE & EXTENDED BIDDING IN EFFECT

Register to Bid Online - www.greatlakesauction.net

ONLINE AUCTION

STARTING: JUNE 19, 2017 • STARTS ENDING: JUNE 22, 2017 @ 11 AM

AMERICAN PELLET & RECYCLING LLC

503 S SHIAWASSEE ST, CORUNNA, MI 48817 & 3236 S DYE RD, FLINT, MI 48505

The Pellet Mill (Corunna Loc.) Will Be Under Power Producing Pellets On June 13 From 9 Am – 5 Pm

The Flint Location Will Be Open For Inspection On June 19 From 9 Am – 5 Pm



PELLET MANUFACTURING EQUIPMENT

(Pellet Manufacturing Equipment Subject To Prior Bulk Sale, Visit www.rjmauctions.com For Details)

- 2013 CALIFORNIA PELLET MILL**, 4.5 TON, 3,407 HRS, S/N 3A1251, TYPE # PNW7930-4, 400 HP
- CALIFORNIA PELLET MILL CO PELLET MILL**, S/N 202-294059
- 2015 HAMER/YASKAWA MPL160** PALLETIZING ROBOT SYS
- HAMER** 2090 HFFS BAGGING MACH, S/N 13209070
- CHAMPION HAMMERMILL**, 200 HP, 3 PH, 460V, 1770 RPM, S/N 435709, W/EXTRA SCREENS
- TORIT DUST COLLECTION SYS W/CAROLINA BLOWER** 806SD, S/N B11874
- FREEMAN & FREEMAN** 522 CLASSIFYING SHAKER DECK, 7.5 HP
- COLORADO MILL EQUIPMENT LLC (CME) CF5** CFC PELLET COOLER, S/N 00203B11
- AIRZONA INSTRUMENT** MAX 5000XL MOISTURE & ASH ANALYZER, S/N 500420
- LARGE QUANTITY OF BAG HOUSES, CYCLONES, AIRLOCKS, CONVEYORS & MUCH MORE!**

TRUCKS

- 2009 MACK** CXU612 S/A HWY TRACTOR, V/N 1M18AWOY89N001713, OD READS 324,651.3 MI
- 2009 INTERNATIONAL** "PROSTAR" 6X4 T/A SLEEPER HWY TRACTOR, V/N 2HSCTSJR59C142614, W/ MAXXFORCE 13 DSL POWER
- 2005 STERLING** AT9522 T/A HWY TRACTOR, V/N 2FWJA3CVS5AV15322, MERCEDES BENZ POWER
- 2004 FREIGHTLINER** FL112 T/A HWY TRACTOR, V/N 1FUJBGCV74DM45213, MERCEDES BENZ POWER
- 1999 VOLVO** M11 S/A HWY TRACTOR, V/N 4VA7BAPF-6XN770646, OD READS 43,789.2 MI (POSSIBLY ROLLED OVER)
- 1993 WHITE GMC** T/A SLEEPER HWY TRACTOR, V/N 4V1WDBJF7PN659673
- 2000 GMC** 102" STAKE BED PICK-UP, V/N 1GDJ34J7YF457439, W/MEYER DIAMOND SALT SPREADER & PLOW, APPROX. 134,000 MI
- 2006 FORD** F-150 PICK-UP, V/N 1FTRX12W36KC21423, 166,000 MI
- 2005 FORD** F-150 EXT CAP PICK-UP, V/N 1FTVX14565NB23101, 147,716 MI

TRAILERS

- 20' X 92"** T/A EQ TRAILER W/BEAVER TAIL RAMPS, LIKE NEW LANDING GEAR, PINTLE HITCH, ALL RECOND.
- 2003 DAVIS** 14' UTILITY SKIDSTEER TRAILER W/ RAMPS, PINTLE HITCH
- DETACHABLE** GOOSENECK LOWBOY, TRI-AXLE PUSHER TRAILER
- APPROXIMATELY 50 TRAILERS**, 48-53' VAN TRAILERS, OPEN TOP, ETC.

CONSTRUCTION EQUIPMENT

- NEW HOLLAND** LM850CTPTMR HYD BOOM LIFT W/ BKT, S/N 041718870, 954.15 HRS
- 2001 SCHAEFF** SKL-823 ARTIC. FRONT END LOADER, S/N 823-1000, 7615 HRS, W/ GRAPPLE BKT
- 1990 TCM** TURBO HSTA 810A ARTIC. FRONT END LOADER, S/N 61405751, 557 HRS SHOWING, W/ DYNAMAX REAR POWER LIFT
- 2002 JCB** LOADALL 520 TELESCOPING FORK LIFT, S/N SLP520502E0881948, 2879 HRS, W/4 FORK LIFT SYS
- 1998 JLG** 40HA, 40' X 500 LB MANLIFT, S/N 0694690300035953
- 2000 JC BAMBORD** SKID STEER LOADER, S/N SLP1055AYE0804228, 2942 HRS
- PEERLESS** FIRE PUMP, MDL 68F15, S/N 366906, 1500 GPM, 125 PSI, POWER BY CUMMINS 175 HP, 1750 RPM DSL ENG
- BOBCAT** 743 SKID STEER LOADER, S/N 501963822, NO WHEELS, BKT OR SEAT
- BOBCAT** 72 SWEEPER, S/N 78371663
- 20' SHIPPING CONT.**, 1,170 CU. FT. CAP, SWING DOORS

LIFT TRUCKS

- HYSTER** H300A, 30,000 LB LIFT CAP FORK LIFT TRUCK, DUAL MAST, 210", S/N A19P19885, 88.5" DRIVE TREAD WIDTH, DUAL FRONT TIRES, 6' HEAVY DUTY FORKS
- CAT** V30D PROPANE POWERED SINGLE MAST FORKLIFT TRK, 42" FORKS, HARD RUBBER TIRES
- CAT** GC25K PROPANE POWERED TRIPLE MAST FORK LIFT TRUCK, 53" FORK, HARD RUBBER TIRES
- HYSTER** E60Z-33 ELEC POWERED 4,850 LB CAP LIFT TRUCK W/TRIPLE MAST, 6108-V04476C, NO FORKS, HARD RUBBER TIRES
- NISSAN** PROPANE POWERED FORK LIFT TRUCK, TRIPLE MAST, 48" FORK, HARD RUBBER TIRES
- MITSUBISHI** FGC25K PROPANE POWERED 4,700 LB CAP FORK LIFT TRUCK, S/N AF82C-01871, TRIPLE MAST, 48" FORKS, HARD RUBBER TIRES
- CLARK** C500-35 PROPANE POWERED 3,100 LB CAP FORK LIFT TRUCK, S/N 355-316-4047, SINGLE MAST, 36" FORKS, HARD RUBBER TIRES
- CAT** C5000LP PROPANE POWERED FORK LIFT TRUCK, S/N AT9011627, TRIPLE MAST, 42" FORKS, HARD RUBBER TIRES

TRACTORS

- CASE** HY-DRIVE 444 TRACTOR W/ PLOW, KOHLER 12 HP MOTOR, MDL M12S
- CASE** INGERSOL 446 TRACTOR W/INGERSOL SNOW THROWER
- ATH** 900 PTO BRUSH HOG, 90' CUT FINISH MOWER
- 6' PTO** BRUSH HOG

MACHINERY

- HF WELLS** HORIZONTAL BAND SAW, MDL W9, S/N 482732
 - GROTTE** 1600 UP CUT SAW
 - DO-ALL** SAW FOR MEAT, BONE & FISH, 2 HP, MDL MS15, S/N 463514, BLADE LENGTH 120.5
 - LAFATA** WRAP STATION W/ ROTATING TABLE
 - HITACHI** C12FDH LASER CHOP SAW W/ 6' STEEL WORK BENCH
 - LATTNER** ELEC BOILER, 60F, FOR MOLDING MACH
 - 2) 24/42 RAPID** GRANULATORS, 100 HP MOTORS
 - CMC** RADIAL ARM SAW, S/N 968039 W/ 8' TABLE & 36" DRAW
 - 3) PALLET DISMANTELING SAWS**
 - BRIDGEPORT** SERIES 1 2 HP VERTICAL MILLING MACHINE, 48" TABLE, POWER FEED
 - PALLET NOTCHER**
 - GARDNER DENVER** ELECTRA ROTARY SCREW 20 HP HORIZONTAL TANK MTD AIR COMP
 - 5 HP** VERTICAL TANK MTD AIR COMP
 - AMT** HYDRAULIC BARREL PUMP
 - AIR FLOW** BAG SEALER, MODEL ECO-SLR, S/N SLR222
 - 2) ACCURAL** STAINLESS STEEL POWDERED FEEDERS W/ CONTROLS, MODEL 580-356600
 - FRAYCO** DRUM DISPENSING PUMP
 - PREMIER** POSITIVE DISPLACEMENT BLOWER
 - MILLER** SRH-333 DIRECT CURRENT ARC WELDING POWER SOURCE
 - LINCOLN** R3R-400 IDEALARC DC-ARC WELDER, S/N AC394382
 - LINCOLN** IDEALARC 250 ARC WELDER
 - AIR-CO** DISP-PAK 200 WELDER
 - 2) CHANTLAND** AUGER FED BAGGERS, MDL 4190LC, S/N 26836 & 31174
 - LOGAN** HYD PRESS, S/N 41830
 - INSTAPAK** 40W PART A-B FOAM PACKING MACHINE
 - SUNNEX TOOLS** 5220 20 TON HYD SHOP PRESS
 - SPAPONE** HYD SHEAR #62539, 24" CUT BLADE
- ATTY'S, SNOWMOBILE, AUTOMOTIVE & MUCH, MUCH MORE!**



RJM

AUCTIONEERS

R. J. MONTGOMERY & ASSOC., INC.

734-459-2323 INFO@RJMAUCTIONS.COM

VISIT OUR WEBSITE FOR ALL INFO, PHOTOS & TO BID:

www.rjmauctions.com



ESTATE AUCTION

Sunday, June 11, 2017 • 12:00 noon

DAY 1
of a **LARGE**
AUCTION

9700 – 235th St No, Forest Lake, MN 55025

Location: Off of I-35 at Wyoming, MN, take Exit #135 East unto Chisago Cty Rd 22 for ¼ mile, then South on Cty Rd 61 for 3.3 miles to Co Rd 8. Then 3.3 miles SE to Cty Rd 23, then turn Right for 1.1 miles to July Ave & go 2 miles. Turn Right on 235th St No & go 2/10 mile. On Right.

LIVE ONLINE BIDDING
Powered By:
proxibid

YARD EQUIPMENT & GENERATOR

- HD 17,000 BD Generator, heavy duty power systems, dsl, used 3.8 hours
- Blue Bird easy scape aerator, Honda 4 HP
- Toro 880 aerator, Briggs & Stratton 3.5 HP
- Bed Edger, Honda 9.0, model F-991H
- Classen Sod Cutter model 42859
- Everide Mower, Kawasaki 19.0 HP

MOTOR REBUILDING MACHINES

- Sunnen Head hone & Attachments
- Sunnen Precision Honing Machine
- Alliant Milling Machine with vise & Sony Magnescale EA210
- Kwik-Way Boring System
- Sunnen Heavy Duty CAP & Rod Grinder
- Kwik-Way Valve Refacer SVS
- Kwik-Way Jet Spray Washer 213
- Kwik-Way Jet Spray Washer 213
- South Bend 9" Precision Lathe
- Storm Vulcan Block Master 85-B
- Kwik-Way 092 Powerstroke Cyl Hone
- CM Cyclone Chain Hoist w/Load Limiter S

SHOP EQUIPMENT

- Big Joe Fork Lift 9990S, batt op
- Air America air comp 6 HP, 60 gal.
- Ingersoll-Rand Air Compressor on wheels 2 HP, 24 gal.
- C-Aire II compressor 5 HP, 60 gal.

V – PLOWS

- Boss RT Power V Plow 8 ft 2 in
- Boss RT3 Power V Plow 9 ft 2 in

SKID STEERS & ATTACHMENTS

- Tracks & UC for 256C Skid Steer
- Body & Axles for 256C 2 Spd Skid Steer
- Loader Arms & Rams for 256C Skid Steer
- NH LX985 Skid Steer, runs & works good, will need tires, 3332.7 hrs at time of pictures
- 88 Snow Bucket
- Dutchman Tree Spade w/controls mdl 3801
- JD 8875 Skid Steer, Needs Tires
- Bobcat 843 Skid Steer, fork sold separate, Fair tires, hours unknown
- Bobcat 843 Skid Steer, needs tires
- Hydra-Mac 1700 Skid Steer w/Bkt, needs tires
- Berlon Snow Bucket
- Auger bit
- Tree Mover Skid Steer Attachment (Tree Ball Mover)
- Skid Steer Bucket
- Hydraulic Snow Plow for Skid Steer
- Bobcat 15C Auger
- Tree Mover Skid Steer Attach (Tree Ball Mover)
- Protech Snow Pusher for Skid Steer

- Schulte BX74 Snowblower for Skid Steer
- Bobcat Grapple Forks for Skid Steer
- Skid Steer Dirt Bucket
- Grouser Tracks for Skid Steer
- Skid Steer Spade
- Skid Steer Bucket
- Lesco 300 gal. Sprayer w/ FE 170 Kawasaki 5.5 HP eng
- 750 gal Sprayer w/Kohler magnum 16, needs work

PAYLOADERS & TRACTORS

- 966 C Caterpillar Payloader
- 950 Caterpillar Payloader
- JD544-B John Deere Payloader
- Kubota M108X Tractor, 1161.1 hrs, Push blade does not go with
- Kubota M108X Tractor, 1089 hrs, Push blade does not go with
- 2 Push Blades
- JCB215S Tractor with Push Blade, 5315 hrs
- 950 Caterpillar Payloader
- 14 ft. Pusher Blade

HEAVY TRUCKS & TRAILERS

- 2013 MAC End Dump Trailer
- Fast Aluminum End Dump Trailer
- Trail-eze Trailer
- 1999 Peterbilt Sleeper Cab, System, Cat Motor C12, over 1 million mi
- 1997 Kenworth, 898630 mi
- 1996 Ford Aro Max L9000, Cummings Motor 11, 470916 mi

- 1982 Ford 9000, 160938 mi
- 1998 Mack E7-454, Short Sleeper, 575866 mi
- 1976 Ford 8000 Tandem Axle Dump Truck
- Chevrolet 70 Single Axle Dump Truck

*Mileage On Odometers Not Required
But This Is What Is Showing*

CARS – PICKUPS – MOTORCYCLE

- 2006 Chrysler PT Cruiser, repainted
- 2001 Honda Odyssey Mini Van
- 1976 Corvette Stingray, T Top, Orange, 90487 mi
- 1973 Mercury Montego 351, Green
- 1995 Harley Davidson Screaming Eagle Motorcycle, 46480 mi
- Ford F-250XL Super Duty 4x4 200 Pickup/ plow, 241998 mi
- 1994 Silverado Chevrolet 1500 Z71, off road Pickup
- 1999 Ford F-150XL Triton V8 STX Pickup
- 1991 Chevrolet 2500 4X4 Pickup, with V Plow
- 2001 Ford F250 XL Super Duty Triton V8 4X4 Pickup
- 1987 Ford F350 4X4 Pickup with V Plow
- 1991 Chevrolet 2500 4X4 w/Utility Box, Lift Gate

*Mileage On Odometers Not Required
But This Is What Is Showing*

NOT ON PROXY-BID

VEHICLES

- Ford- Runs, moves, rough shape
- 1995 Ford F250 XLT 4X4 / plow
- 1992 Chev 4X4 / plow bracket
- Blue Chev 3500 / dump bed & plow bracket
- 1996 Ford F250 XLT 4X4 / Plow
- 1988 Chev 3500, does not run
- 1979 Chev Silverado 30, Scrap
- 1997 GMC 1500, Scrap
- 1984 Chev / rollback, does not run
- 1992 Chevrolet 1500, for scrap
- 1975 Ford F6 / dump
- 1973 Chev C60 Flatbed / lift gate
- International Truck / Box
- 1990 Chev 2500 Suburban, does not run
- 1991 Ford F700 Truck, does not run
- Ford F600 / Utility Box, Scrap
- International 2050A Fleet Star truck / Vermeer Tree Spade, Scrap

MISC EQUIPMENT

- 15 Misc. Snow Plows • Disc • 1 Sec Drag Cultivator • 4 Fuel Tanks • 2 Bottom Plow • Cutter Blade • Sander • Plow Blade • Pallet

- Snow Blowers & Edgers • Pickup Bed • Hinker Sander • GMC 1 ton Pickup Bed • Kenworth Hood • Alum. Canoe • Pickup Bed / Fiberglass Flares • 2 Packers • 89 in Bucket • Reese 5th wheel hitch • Snow Plow • Scrap Truck • Fiber glass Canoe • A C Tractor • Scrap Iron • 3 14" Pusher Blades • 16" Pusher mower • 16" Pusher Blade • Airplane Tower / Pintle Hitch • Plow Mount Bracket • Lesco Walk behind Mower, ? runs • Skid Steer Trailer Pintle Hitch • Lesco Viper Mower, ? runs • DRETROIT DIESEL ENGINE on Snow Plow Sander • 4 Door Starter Kit for Rat Rod • 4 BF Goodrich Tires & Rims, LT275-7018, off Ford • Lesco LCR7400 4 wheel Drive / mower, ? runs • Cub Cadet Walk Behind Mower, ? runs • 4 Truck Doors, 97-07 F250 F350 • Driverside Door, power lock, power window, power stroke V8 • 99-07 Ford Standard Passenger Door, F250 F350 / harness, no power lock panel • 99-07 Ford F250 F 350 Rear Passenger Door • F 150 Passenger Door • Ford 10-30 01K Drivers side

AUCTIONEERS NOTE: We would like to thank the Estate of Kirk for giving us the opportunity to conduct this Auction. Because of the huge amount of personal property this will have to be a 2 Day Auction. Day 2 will be Saturday June 17th, 10 AM. It will include the Real Estate & balance of the personal property. See other auction Flyer. **PREVIEW DATE FOR VIEWING OF EQ & REAL ESTATE WILL BE THURS, JUNE 1 – 4 - 7 PM**

TERMS AND CONDITIONS: Cash or good check day of Auction. If you are intending to make a large purchase and use a check - please have a current letter of credit from the bank. Accepting all Credit Cards except for American Express - with 3% additional fee. Any items purchased via the internet through Proxibid, will pay Proxibid fee of 5% of purchase price. **EVERYTHING SOLD "AS IS WHERE IS"**. Sale day announcements take precedence over any written material. **"NOT RESPONSIBLE FOR ACCIDENTS"**. **NO BUYERS PREMIUM.**

FOR MORE PHOTOS GO TO JOELPIKEAUCTIONS.COM

KIRK ALMENDINGER ESTATE

Cheryl Almendinger, Personal Rep.

Auction Clerked by Joel Pike Auctions, LLC

Joel Pike - Auctioneer | Lic. # 48-17-003 | Princeton, MN | 507-210-0750

Email Joelpikeauctions@gmail.com or jandlpike@yahoo.com

- If you are thinking of having an auction - Contact Us Today

Joel Pike AUCTIONS

Contact Us Today! 507-210-0750

Joelpikeauctions@gmail.com

JoelPikeAuctions.com

Tagline

Big Iron AUCTIONS

UPCOMING AUCTIONS
CONSTRUCTION
AGRICULTURAL • TRANSPORTATION
OVER 2,500 ITEMS TOTAL!

Wed, June 7



Wed, June 14



Wed, June 21



Wed, June 28



Details on these Auctions & More on our Website

toll-free (800) 937-3558
www.BigIron.com

NOTICE OF PUBLIC AUCTION

TUESDAY, JUNE 13, 2017 • 10:00 AM Local Time
6801 McFarland Blvd., Northport, AL 35476

By virtue of default by Eaton Service Company, LLC, under the three variously dated Promissory Notes, payable to Commercial Credit Group Inc. ("CCG"), which obligation is secured by the property described below (the "Equipment"), CCG will sell at Public Auction, to the highest bidder, **AS-IS, WHERE-IS, WITHOUT ANY REPRESENTATIONS OR WARRANTIES, EXPRESS, IMPLIED OR STATUTORY, INCLUDING WITHOUT LIMITATION, ANY WARRANTY OF MERCHANTABILITY OR ANY WARRANTY OF FITNESS FOR A PARTICULAR PURPOSE**, all of its right, title and interest to the following Equipment:

- | | |
|--|--|
| 2006 Chevrolet Silverado 1500LS extended cab 4x4 Pickup Truck, SN 1GCEK19Z96Z281517 | 2006 Freightliner Columbia CL120 day cab tandem axle Truck Tractor with a Detroit Diesel engine, 13 speed transmission, SN 1FUJA6CK06LX00585 |
| 2008 Jeep Grand Cherokee Laredo 4x4 Sport Utility Vehicle, SN 1J8GR48K38C223251 | 2006 Freightliner Columbia CL120 day cab tandem axle Truck Tractor with a Detroit Diesel engine, 13 speed transmission, SN 1FUJA6CK56LX00582 |
| 2007 Ford F150 4x2 regular cab Pickup Truck, SN 1FTRF14V37NA48221 | 1987 Witco RG60 sixty (60) ton quad axle Beam Trailer, SN 1W9A11F47HS061043 |
| 1998 Kobelco TLK760 Loader Backhoe, SN 7606091 | 1973 Shop Built four (4) bolster tandem axle Log Trailer, SN 42188 |
| 2008 John Deere 643J Feller Buncher with a John Deere FD22B saw head, SN DW643JX615967 | 1993 Southeastern 36 foot tandem axle End Dump Trailer, SN 1S9DT28T3PL399148 |
| 2004 Caterpillar D5N XL Crawler Tractor with six (6) way blade, cab with a/c, sweeps and screens, SN AGG01089 | 1999 Etnyre 55 ton quad-axle non-ground bearing Lowboy Trailer with air ride suspension and hydraulic detachable neck and with an Etnyre Beam Section for a lowboy trailer, SN 1E926980XXE111300 |
| 1990 Peterbilt 330 Service Truck with Cummins engine, toolbody, air compressor, welder and crane, SN 1XPAH57X5LN291940 | 2012 Kenworth W900L tri-axle Truck Tractor with a Cummins ISX15 450 HP engine, flat top sleeper, fuller 13 speed transmission, air lift 3rd axle and engine brake, SN 1XKWP4EX7CJ334189 |
| 2003 Ford F550 crew cab Fuel and Lube Truck with V10, automatic transmission, flatbed body, fuel tank, lube and grease tank, hose reels and air compressor, SN 1FDAW56S33EB34903 | 2008 John Deere 437C trailer mounted log loader with a grapple and an attached, SN T0437CX157562 |
| 1997 Kenworth T800 day cab tandem axle Truck Tractor with Caterpillar engine, SN 1XKDDT9X1VJ752710 | CSI PTD264 delimeter, SN 26407011360 |
| 1992 Kenworth T800 day cab tandem axle Truck Tractor with a Caterpillar engine, SN 1NKDLB9X5NJ581483 | 2008 Pitts KB48-D tandem axle knuckle boom log loader trailer, SN 5JYKB48258P080643 |
| 2007 Peterbilt 378 day cab tandem axle Truck Tractor with a Caterpillar C13 engine and 10 speed transmission, SN 1XPFDU9X37N734603 | 2005 Tigercat 718 feller buncher with an attached, SN 7180696 |
| | Tigercat DW5603 bunching saw, SN 561403 |

TERMS: Successful bidder must pay 25% of purchase price at time of sale via cash, certified or acceptable bank check, with the balance payable in good funds on the next business day, unless: **1.** The bidder has pre-qualified by presenting CCG with a written non-contingent, lending commitment from a source and in a form acceptable to CCG in its sole discretion, in which case we will entertain bids up to the amount of such written commitment; or **2.** The bidder has obtained from CCG written credit approval in advance of the scheduled public sale.

Commercial Credit Group Inc.
227 West Trade Street, Suite 1450
Charlotte, NC 28202

CCG reserves the right to bid at the sale. Contact Brett Goodman at (704)-731-0031 for additional information or to arrange an inspection of the Equipment.

AUCTION CALENDAR

AUCTIONEERS: Have your dates listed (NO CHARGE) in our Weekly Issue & On-Line • Call 800-247-2000 • www.contractorshotline.com

06/01-06/07	Online	Jeff Martin Auctioneers	A	(601) 450-6200
06/03	Buffalo (Online), NY	Alex Lyon & Son Auctioneers	A	(315) 633-2944
06/03	White Pine (Online), TN	Pro Team Auction Company	A	(865) 674-7002
06/05	Kansas City (Online), MO	ConAgAuctions.com	A	(816) 519-2113
06/06	Atikokan (ON), CAN	Corporate Assets	A	(416) 962-9600
06/06	Online	Heath Industrial	A	(847) 380-1755
06/06	Waukomis (Online), OK	Lippard Auctioneers	A	(580) 237-7174
06/06	Summerville (Online), WV	Martin & Martin Auctioneers	A	(864) 947-7888
06/06	Eagle, MI	Sheridan Realty & Auction Company	A	(517) 676-9800
06/07	Lexington (Online), KY	Alex Lyon & Son Auctioneers	A	(315) 633-2944
06/08	Midland (Online), TX	Beazley Auctioneers	A	(800) 670-1227
06/08	Orland Park (Online), IL	Heath Industrial	A	(847) 380-1755
06/08	Arcanum (Online), OH	Midwest Auctioneers	A	(937) 548-2640
06/08	Online	Steffes Group	A	(701) 237-9173
06/08	Atlanta (Online), GA	Yoder & Frey Auctioneers	A	(419) 865-3990
06/09	Hamilton (Online), OH	Myron Bowling Auctioneers	A	(513) 738-3311
06/09-06/10	Dansville (Online), MI	Tim Narhi Auctioneers	A	(810) 266-6474
06/10	Parkersburg (Online), WV	Alex Lyon & Son Auctioneers	A	(315) 633-2944
06/10	Sacramento, CA	Bar None Auction	A	(530) 622-2700
06/10	Gloversville (Online), NY	County Line Auction	A	(518) 773-2247
06/10	Chicago (Online), IL	Don Smock Auctioneers	A	(765) 778-9277
06/10	Semmes, AL	Jeff Martin Auctioneers	A	(601) 450-6200
06/11	Forest Lake, MN	Joel Pike Auctions	A	(507) 210-0750
06/13	Online	Terra Point LLC	A	(512) 368-8299
06/13-06/15	Montgomery (Online), AL	J. M. Wood Auction Company	A	(334) 264-3265
06/14	New Castle, PA	Capital Recovery Group	A	(800) 300-6852
06/15	Lester (Online), PA	Equip Seller	A	(484) 494-6516
06/15	Indianapolis, IN	Key Auctioneers	A	(317) 353-1100
06/15	United Kingdom	Kumar & Company	A	(440) 121-4480
06/16	Dallas (Online), TX	Beazley Auctioneers	A	(972) 924-0885
06/16	Pendleton (Online), IN	Don Smock Auctioneers	A	(765) 778-9277
06/16	Marietta, PA	Hess Auctioneers	A	(866) 511-2493
06/17	Fairbanks (Online), AR	1st Strike Auction	A	(907) 978-4449
06/17	Las Vegas (Online), NV	Alex Lyon & Son Auctioneers	A	(315) 633-2944
06/17	Riverside, CA	Bar None Auction	A	(530) 622-2700
06/17	Gloversville (Online), NY	County Line Auction	A	(518) 773-2247
06/19-06/22	Online	R.J. Montgomery Auctioneers	A	(734) 459-2323
06/20	Houston (Online), TX	Alex Lyon & Son Auctioneers	A	(315) 633-2944
06/20	Wills Point, TX	Equify Auctions	A	(817) 490-6800
06/20	Milwaukee, WI	Great Lakes Auction Company	A	(414) 371-1552
06/21	Saginaw, MI	Darell Dunkle Auctioneers	A	(800) 433-6670
06/21	Stanton (Online), TX	Jeff Martin Auctioneers	A	(601) 450-6200
06/21	Ashland (Online), OH	Yoder & Frey Auctioneers	A	(419) 865-3990

06/22	Wellsburg (Online), WV	Cincinnati Industrial Auctioneers	A	(513) 241-9701
06/22	Elk Grove Village, IL	Heath Industrial	A	(847) 380-1755
06/22	Pelzer (Online), SC	Martin & Martin Auctioneers	A	(864) 947-7888
06/24	Warrenton (Online), NC	Alex Lyon & Son Auctioneers	A	(315) 633-2944
06/24	Atlantic City (Online), NJ	Alex Lyon & Son Auctioneers	A	(315) 633-2944
06/24	Appleton, WI	Auction Associates	A	(920) 748-3002
06/24	Warrenton (Online), NC	E.B. Harris Inc	A	(252) 257-2140
06/24	Mt. Airy (Online), NC	Rogers Realty & Auction Co	A	(336) 789-2926
06/24	Lakeland (Online), GA	Zenith Auction & Realty	A	(229) 482-2116
06/28	Casper (Online), WY	Cannon Sales Inc.	A	(830) 336-3983
06/28	Saltcoats, SK (CAN)	Ukrainetz Auctions	A	(306) 647-2661
06/29	Milliken (Online), CO	Cincinnati Industrial Auctioneers	A	(513) 241-9701
06/29-06/30	Montgomery (Online), AL	J. M. Wood Auction Company	A	(334) 264-3265
06/30	Portland, OR	Bar None Auction	A	(530) 622-2700
06/30	Shippensburg, PA	Shetron Auctions	A	(717) 532-8828
07/08	Sacramento, CA	Bar None Auction	A	(530) 622-2700
07/19-07/20	Philadelphia, MS	Deanco Auction Company	A	(601) 656-9768
07/20-07/22	Livingston (Online), LA	Henderson Auctions	A	(225) 686-2252
07/28	Portland, OR	Bar None Auction	A	(530) 622-2700
08/12	Sacramento, CA	Bar None Auction	A	(530) 622-2700
08/25	Portland, OR	Bar None Auction	A	(530) 622-2700
08/25	Shippensburg, PA	Shetron Auctions	A	(717) 532-8828
08/26	Wauwatosa, WI	Auction Associates	A	(920) 748-3002
08/26-08/27	Chattanooga, TN	Compass Auctions	A	(423) 702-6180
09/09	Sacramento, CA	Bar None Auction	A	(530) 622-2700
09/12-09/13	Philadelphia, MS	Deanco Auction Company	A	(601) 656-9768
09/22	Pendleton (Online), IN	Don Smock Auctioneers	A	(765) 778-9277
09/29	Portland, OR	Bar None Auction	A	(530) 622-2700
10/07	Fond du Lac, WI	Auction Associates	A	(920) 748-3002
10/14	Sacramento, CA	Bar None Auction	A	(530) 622-2700
10/21	Rockford (Online), IL	Don Smock Auctioneers	A	(765) 778-9277
10/27	Portland, OR	Bar None Auction	A	(530) 622-2700
10/27	Shippensburg, PA	Shetron Auctions	A	(717) 532-8828
11/11	Sacramento, CA	Bar None Auction	A	(530) 622-2700
11/15-11/16	Philadelphia, MS	Deanco Auction Company	A	(601) 656-9768
12/02	Fond du Lac, WI	Auction Associates	A	(920) 748-3002
12/07	Pendleton (Online), IN	Don Smock Auctioneers	A	(765) 778-9277
12/09	Sacramento, CA	Bar None Auction	A	(530) 622-2700
12/22	Shippensburg, PA	Shetron Auctions	A	(717) 532-8828

SEE OUR WEBSITE FOR MORE AUCTIONS

A=Construction Eq/Trucks & Trailers; B=County/City Surplus; C=OTR Trucks/Trailers/Vans;
 D=Logging/Forestry/Lumber; E=Oilfield/Drilling/Services; F=Mining/Quarry/Etc; G=Cable/Underground;
 H=Railroad/Machine Shop; I=Other (Call Auction Company for Information); J=Powerline/Utility; K=Farm/Construction